

NIKITA BABAEV

PORTFOLIO

HEIGHT

6' 3 ½

HAIR

BROWN

EYES

BLUE/GREEN

BUST

2' 11

WAIST

2' 5

HIPS

2' 12



BACCA MODEL  
MANAGEMENT

BACCA MODEL MANAGEMENT

RUSSIA, MOSCOW & SAINT PETERSBURG

[[+PHONE]] - BACCA-MODELS.COM



BACCA MODEL  
MANAGEMENT

BACCA MODEL MANAGEMENT  
RUSSIA, MOSCOW & SAINT PETERSBURG  
[[+PHONE]] - BACCA-MODELS.COM



BACCA MODEL  
MANAGEMENT

BACCA MODEL MANAGEMENT  
RUSSIA, MOSCOW & SAINT PETERSBURG  
[[+PHONE]] - BACCA-MODELS.COM



BACCA MODEL  
MANAGEMENT

BACCA MODEL MANAGEMENT

RUSSIA, MOSCOW & SAINT PETERSBURG

[[+PHONE]] - BACCA-MODELS.COM



BACCA MODEL  
MANAGEMENT

BACCA MODEL MANAGEMENT  
RUSSIA, MOSCOW & SAINT PETERSBURG  
[[+PHONE]] - BACCA-MODELS.COM



BACCA MODEL  
MANAGEMENT



BACCA MODEL MANAGEMENT  
RUSSIA, MOSCOW & SAINT PETERSBURG  
[[+PHONE]] - BACCA-MODELS.COM



BACCA MODEL  
MANAGEMENT



BACCA MODEL MANAGEMENT  
RUSSIA, MOSCOW & SAINT PETERSBURG  
[[+PHONE]] - BACCA-MODELS.COM



BACCA MODEL  
MANAGEMENT

BACCA MODEL MANAGEMENT

RUSSIA, MOSCOW & SAINT PETERSBURG

[[+PHONE]] - BACCA-MODELS.COM





BACCA MODEL  
MANAGEMENT

BACCA MODEL MANAGEMENT  
RUSSIA, MOSCOW & SAINT PETERSBURG  
[[+PHONE]] - BACCA-MODELS.COM



BACCA MODEL  
MANAGEMENT

BACCA MODEL MANAGEMENT  
RUSSIA, MOSCOW & SAINT PETERSBURG  
[[+PHONE]] - BACCA-MODELS.COM



BACCA MODEL  
MANAGEMENT

BACCA MODEL MANAGEMENT  
RUSSIA, MOSCOW & SAINT PETERSBURG  
[[+PHONE]] - BACCA-MODELS.COM

IMAGE NOT FOUND OR TYPE UNKNOWN

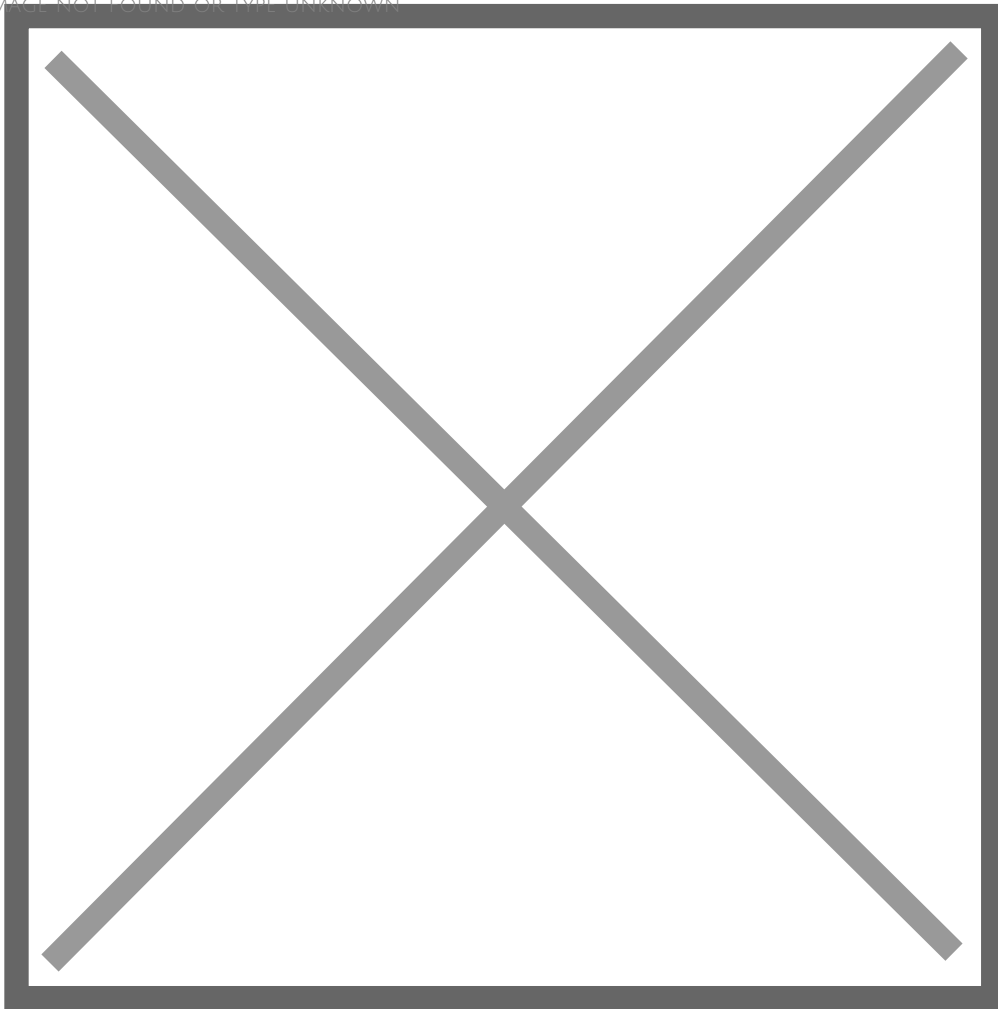
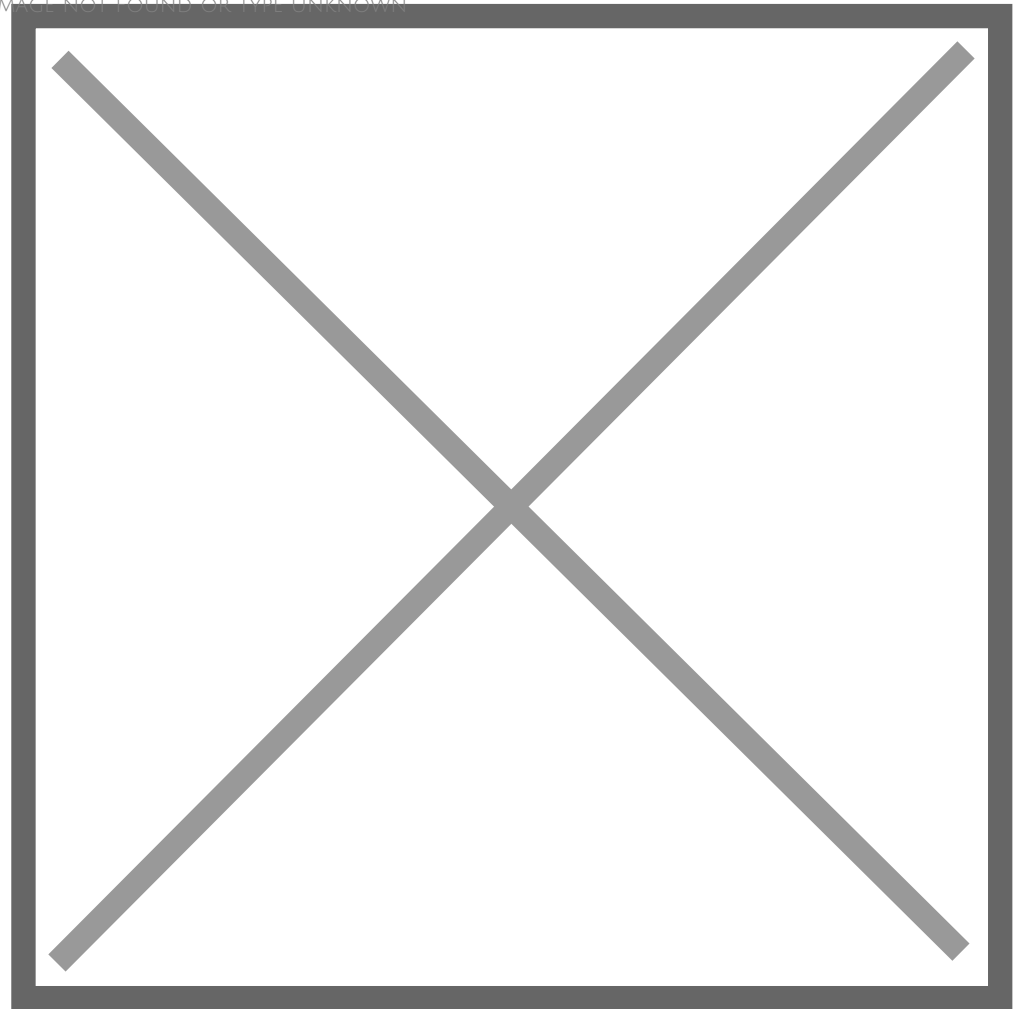


IMAGE NOT FOUND OR TYPE UNKNOWN



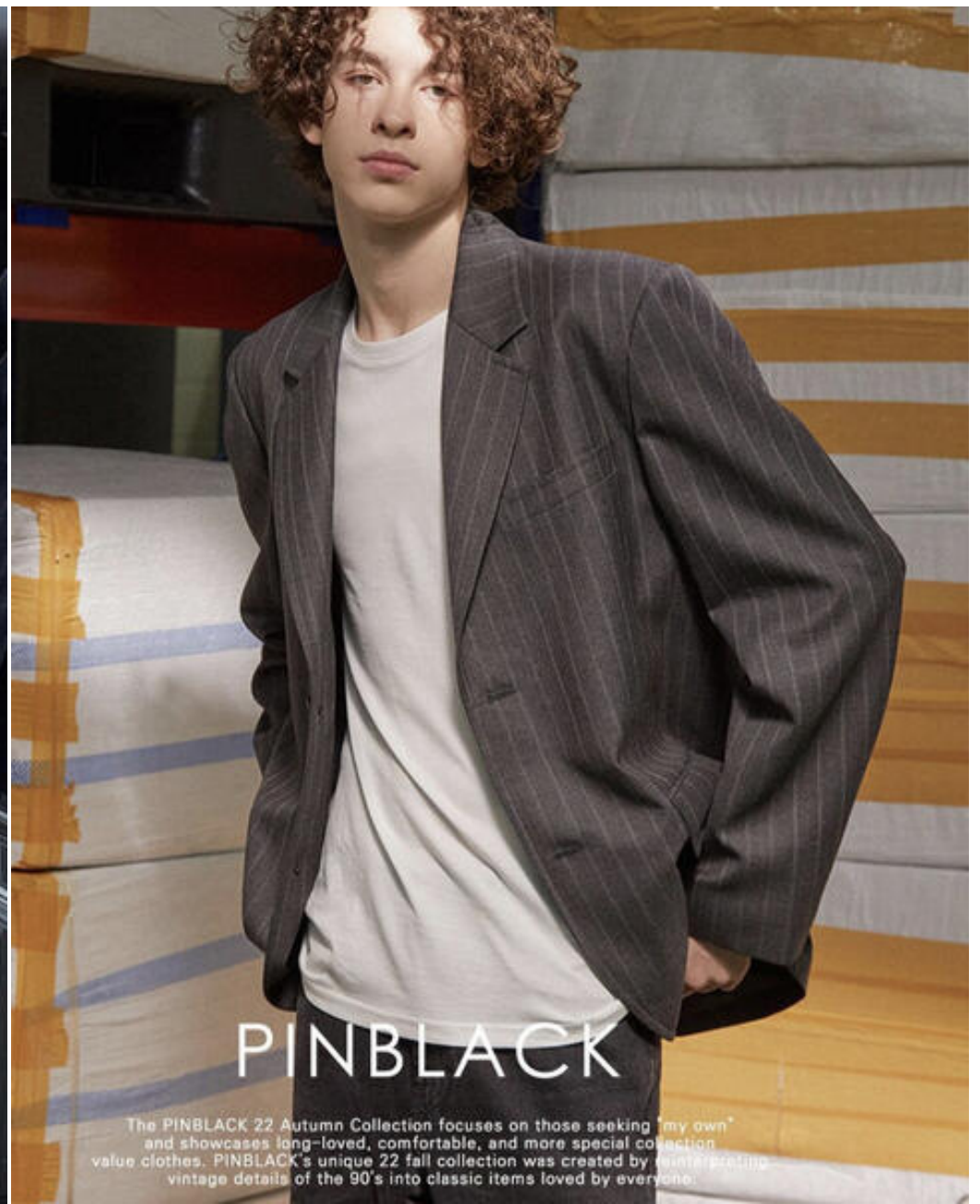


BACCA MODEL  
MANAGEMENT

BACCA MODEL MANAGEMENT  
RUSSIA, MOSCOW & SAINT PETERSBURG  
[[+PHONE]] - BACCA-MODELS.COM



BACCA MODEL  
MANAGEMENT



BACCA MODEL MANAGEMENT  
RUSSIA, MOSCOW & SAINT PETERSBURG  
[[+PHONE]] - BACCA-MODELS.COM



BACCA MODEL  
MANAGEMENT

BACCA MODEL MANAGEMENT  
RUSSIA, MOSCOW & SAINT PETERSBURG  
[[+PHONE]] - BACCA-MODELS.COM



BACCA MODEL  
MANAGEMENT

BACCA MODEL MANAGEMENT  
RUSSIA, MOSCOW & SAINT PETERSBURG  
[[+PHONE]] - BACCA-MODELS.COM